

5046-000

# "EXIT 93, LLC M.U.P.D."

A REPLAT OF A PORTION OF TRACT 64, BLOCK 24, "PALM BEACH FARMS COMPANY PLAT NO. 3", P.B. 2, PAGES 45-54, P.B.C.R. SECTION 29, TOWNSHIP 44 SOUTH, RANGE 42 EAST PALM BEACH COUNTY-FLORIDA

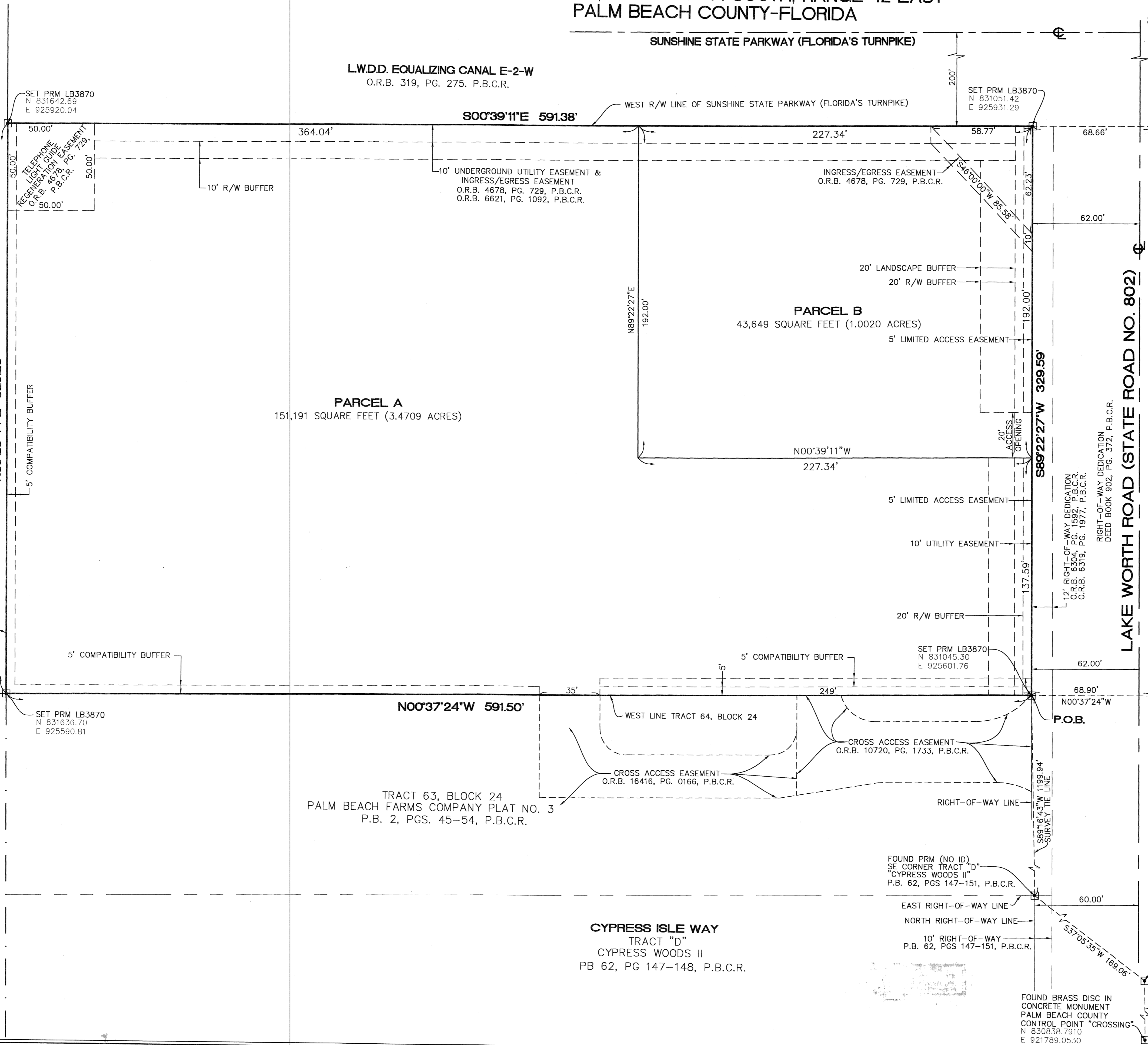
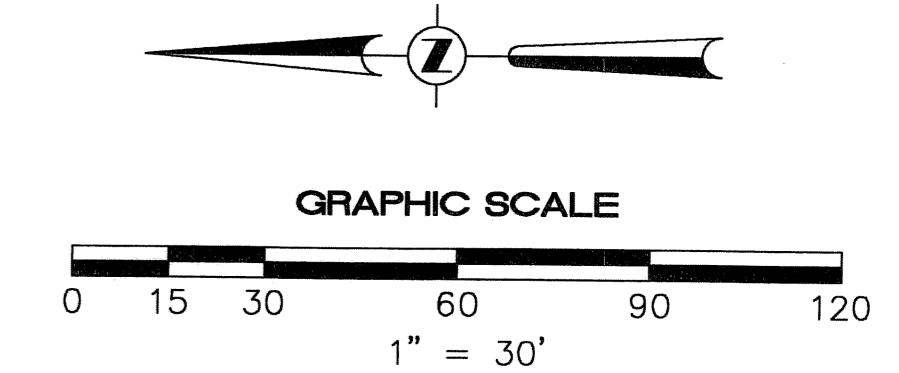
162

SHEET 3 OF 4 SHEETS

STATE OF FLORIDA  
COUNTY OF PALM BEACH  
THIS PLAT WAS FILED FOR RECORD AT \_\_\_\_\_ M.,  
THIS \_\_\_\_\_ DAY OF \_\_\_\_\_ AND  
DULY RECORDED IN PLAT BOOK NUMBER \_\_\_\_\_  
AT PAGE \_\_\_\_\_  
SHARON R. Bocik  
CLERK OF THE CIRCUIT COURT  
BY: \_\_\_\_\_  
DEPUTY CLERK

PREPARED BY  
**PULICE LAND SURVEYORS, INC.**

CERTIFICATE OF AUTHORIZATION LB3870  
5381 NOB HILL ROAD  
SUNRISE, FLORIDA 33351  
(954) 572-1777  
FAX (954) 572-1778  
OCTOBER 2003



TRACT 49, BLOCK 24  
PALM BEACH FARMS COMPANY PLAT NO. 3  
P.B. 2, PGS. 45-54, P.B.C.R.

TRACT 50, BLOCK 24  
PALM BEACH FARMS  
COMPANY PLAT NO. 3  
P.B. 2, PGS. 45-54, P.B.C.R.

PARCEL A  
151,191 SQUARE FEET (3.4709 ACRES)

PARCEL B  
43,649 SQUARE FEET (1.0020 ACRES)

TRACT 63, BLOCK 24  
PALM BEACH FARMS COMPANY PLAT NO. 3  
P.B. 2, PGS. 45-54, P.B.C.R.

CYPRESS ISLE WAY  
TRACT "D"  
CYPRESS WOODS II  
PB 62, PG 147-148, P.B.C.R.

LAKE WORTH ROAD (STATE ROAD NO. 802)

SUBDIVISION EXIT 93, LLC  
BOOK 104 PAGE 162  
FLOOD ZONE B FLOOD MAP # 1704  
ZONING MUPD  
SE QUAD # 4B  
TAZ 1014  
FUD NAME ZIP CODE 33467

FOUND BRASS DISC IN  
CONCRETE MONUMENT  
PALM BEACH COUNTY  
CONTROL POINT "CROSSING"  
N 830838.7910  
E 921789.0530

FOUND BRASS DISC IN  
CONCRETE MONUMENT  
PALM BEACH COUNTY  
CONTROL POINT "SUMMER"  
N 830885.4090  
E 924301.1320